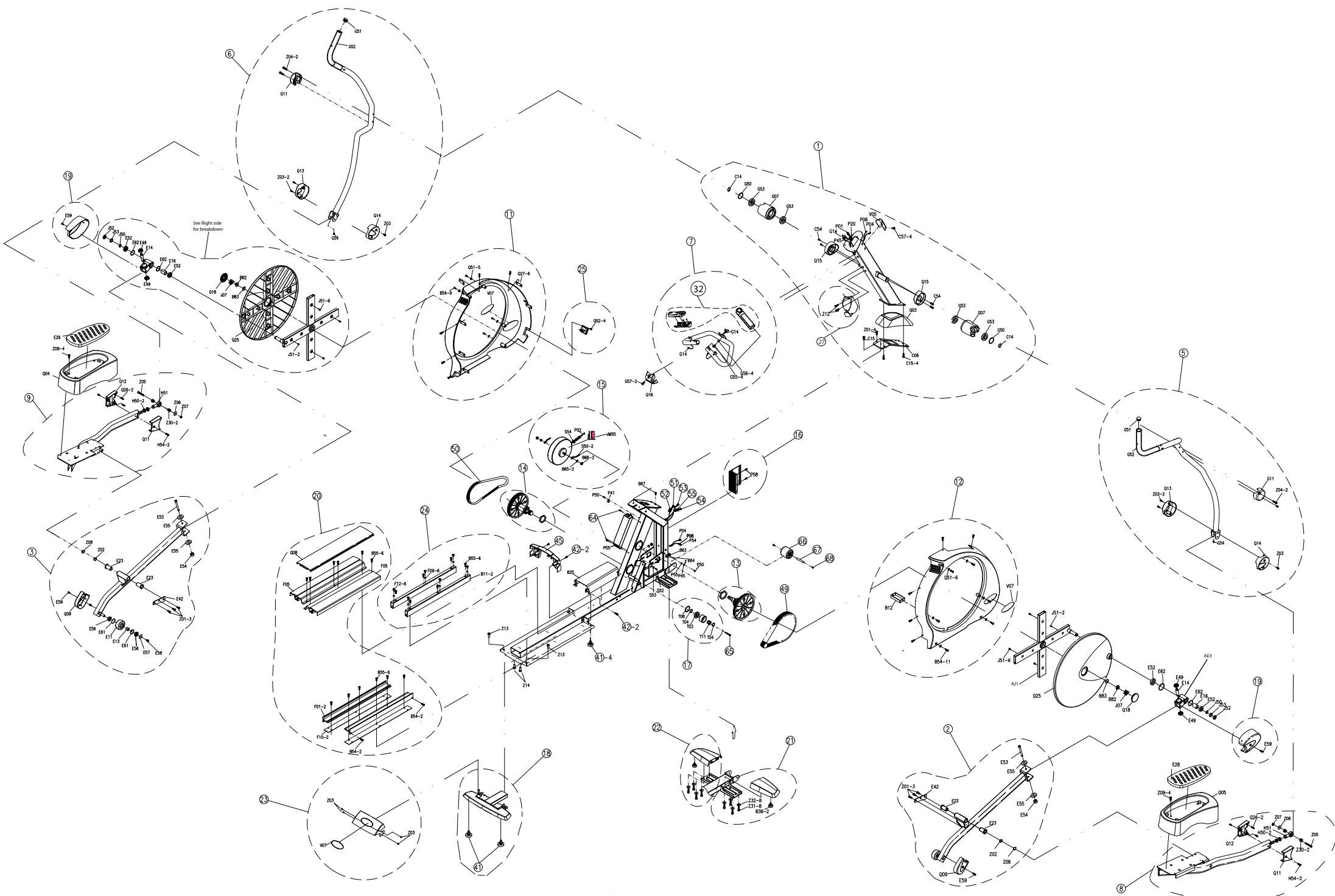


Service drawing of matrix E3xc-01/H3x-01/U3x-01/R3x-01 console



Service Drawing of Matrix E3xc-01

| Reference | Part # | Description |
|-----------|-------------|---|
| | 0000083066 | Decal;Side Cover;SNAP;EP74 |
| 11 | 0000087828 | Side Cover Set;Left;MX-E5XC-F;US;EP81 |
| 12 | 0000087829 | Side Cover Set;Right;MX-E5XC-F;US;EP81 |
| 14 | 0000088124 | Pulley Axle Set;MX-E5XC-F;EP81 |
| 15 | 0000087786 | Generator Set;MX-E5XC-F;US;EP81 |
| 150 | 0000092368 | Overlay;Console;Upper;Eng;PET;0.2t;H3x-0 |
| 151 | 0000092370 | Overlay;Console;Middle;Eng;PET;0.8t;H3x- |
| 152 | 0000092369 | Overlay;Console;Under;Eng;PET;0.2t;H3x-0 |
| 153 | 059890-A | Ribbon Cable Cord;K5A RP 28.5x6.5x12;Jia Zhen;EP68 |
| 156 | 032524-CR | Membrane Keypad;Right;Plane 4Key;CB64 |
| 157 | 037811-B | LED Apertures Board |
| 158 | 0000093149 | Reading Rack Set;MX-E5XC;US;EP74 |
| 160 | 004431-AB | Screw;Phillip;Sink;M3x0.5Px8L;BED; |
| 161 | 0000090936 | Fix Plate;Reading Rack;SPHC 2.0t(BED); |
| 162 | 0000083864 | Faceplate,Console Plastic(PAINT);EP68-US |
| 163 | 0000093153 | Load Board;Program;MX-H5X;US;CB64 |
| 164 | 004649-00 | Screw;Phillip;Round;3x6L;Black;Gap;;Zn- |
| 166 | 056004-A | Pulse Sensor Wire;300L |
| 167 | 0000083655 | Heart Rate Board Receiver;Inbuilt;All in one;SALUTRON 850 |
| 169 | 056008-A | Ground Wire;Pulse Grip;100L;(KST FDFNYD2-250-1 HSG |
| 17 | 00000350493 | Idler Set;;;Integrated;EP304; |
| 170 | 0000093152 | Display Board;MX-H5X;US;CB64 |
| 171 | 0000093151 | Display Board;MX-H5X;US;CB64 |
| 172 | 0000093154 | Control Board;Console;A3x-01;US;EP99 |
| 173 | 028501-BR | Signal Wire;1;140L;(XAP-10V-1)x2;CB61; |
| 174 | 028502-BR | Signal Wire;2;105L;(XAP-08V-1)x2;CB61; |
| 175 | 028503-BR | Signal Wire;3;130L;(XAP-05V-1)x2;CB61; |
| 176 | 028504-BR | Signal Wire;4;50L;(XAP-05V-1)x2;CB61; |
| 177 | 034586-BR | Quickl Key Wire;200L;(TKP H6630P-06+TKP |
| 178 | 0000083865 | Console Back Cover |
| 18 | 0000090644 | Stabilizer Set;Rear;MX-E5XC-F;EP81 |
| 180 | 0000093155 | Battery Cover 2;MX-E3;US;EP68 |
| 181 | 000932-E | Cap;C-Safe;Black;CB32\\ D/C |
| 182 | 0000083902 | Bottle Holder;Console Back |
| 183 | 004356-AB | Screw;Phillip;BH;M4x0.7Px12L;BED; |
| 184 | 018589-DR | Console Cable;Upper;200L;KP H6630P1-08;EP71; |
| 186 | 018591-CR | Battery Connecting Plate;9 Volt;150(XAP-02V-1+9V B |
| 187 | 0000092411 | Assembly Manual;ENG;A3X-01;US;EP99 |
| 189 | 003383-A | Ferrite Choke;FH0900B-2;Lian Ci;TM38 |
| 19 | 0000093092 | Crank Cover Set;PP;BL;MX-E5XC-F;US;EP81 |
| 190 | 0000090651 | Hardware Package Set(1);MX-E5XC-F;U |
| 2 | 0000088119 | Pedal Arm Set;Right;MX-E5XC-F;;EP81\\ D/C |
| 20 | 0000090647 | Rail Set;MX-E5XC-F;US;EP81 |
| 23 | 0000093130 | Rear Stabilizer Cover Set;B;MX-E5XC;US;EP74 |
| 24 | 0000093093 | Guide Rail Fixing Tube Set;MX-E5XC-F;US;EP81 |
| 25 | 0000092396 | E-Port Fix Plate Set;E3XC-01;US;EP301 |

| | | |
|-----|------------|--|
| 27 | 0000088923 | Bottle Holder Set;Console Mast;ABS/PA746;BL |
| 31 | 0000213547 | CONSOLE SET;H001S004;EP301;ES;EN;EP301; |
| 41 | 000490-BA | Leveler;Foot Pad |
| 42 | 004375-00 | Screw;Phillip;BH;M5x0.8Px15L;Gap;;Zn-BL |
| 43 | 004931-00 | Nut;Locking;Nylon;1/4'-20UNC |
| 44 | 005112-00 | Washer;Flat;8.2X13.0X1.4T;BAN |
| 45 | 000049-BA | Cover;Frame;ABS PA-746;BL;EP68 |
| 46 | 015641-AA | Anti-Sweat Cover;SL;;;EP68 |
| 5 | 0000087708 | Handlebar Set;Right;;MX-E5XC-F;;U |
| 50 | 027963-A | Drive Belt;Poly-V;350-J8\D/C |
| 51 | 002122-FR | Console Cable;1350L;XAP-08V-1;EP68; |
| 52 | 056225-A | Ferrite;PART OF #79 CABLE;NOT ORDERABLE; |
| 53 | 002682-CR | Generator Wire;100L;(3.96-5P WH VH+HL20P-03);E |
| 54 | 028506-BR | Resistance;Power;Wire;400W 10 750mm;EP6 |
| 55 | 056226-A | Resistor Cord;FH0900W;Lian Ci;EP68 |
| 58 | 004364-00 | Screw;Oval Head;M5x0.8Px12L |
| 6 | 0000087731 | Handlebar Set;Left;MX-E5XC-F;;US;EP |
| 63 | 056007-A | Ground Wire;Extension;Pulse Grip;1300mm |
| 64 | 004369-AH | Screw;Phillip;BH;Stainless;M5x0.8Px15L; |
| 8 | 0000087767 | Link Arm Set;Right;MX-E5XC-F;;US; |
| 9 | 0000087768 | Link Arm Set;Left;MX-E5XC-F;US;EP81 |
| B11 | 015514-AA | Guide Rail Fix Tube;BL;;;EP68 - D/C |
| B12 | 015642-AA | Connecting Tube Cover; Black |
| B54 | 004375-AC | Screw;Phillip;BH;Stainless;M5x0.8Px15L;BE |
| B55 | 004375-00 | Screw;Phillip;BH;M5x0.8Px15L;Gap;;Zn-BL |
| B65 | 005067-00 | Washer;Flat;10.2X15.0X1.5T;Black Zinc |
| B66 | 004899-00 | Nut;Hex;3/8-26UNCX9T |
| B82 | 004967-AB | Nut;Hex;Flange;M16x1.5P;Carburizing |
| B83 | 005245-A | Washer;Lock;16.2x31.5x1.5T |
| C06 | 008042-F | Connecting Plate;Console Mast |
| C08 | 004983-A | Insert Nut;Hex;NKHS-8125-2.5(M8x1.25P) |
| C11 | 0000080783 | Water Bottle Holder |
| C12 | 0000080784 | Cover;Screw;PVC;BL;CB62; |
| C14 | 005367-00 | C-Clip;External;S-30 |
| C15 | 004493-00 | Screw;Hex Socket;Round;M8x1.25Px16L |
| C54 | 004375-00 | Screw;Phillip;BH;M5x0.8Px15L;Gap;;Zn-BL |
| C57 | 004697-AD | Screw;Flat Hex Socket;M8x1.25Px25L |
| E11 | 053435-Z | Roller Set - D/C |
| E13 | 053435-Z | Roller Set - D/C |
| E16 | 0000089475 | Ring;;;SS41;25.1x44.65;EP72 |
| E23 | 103297 | Bushing;Copper |
| E24 | 0000089150 | CON Plate;Crank Sleeve;SPHC 5.0t;EP72 |
| E28 | 001447-C | Pedal Pad;Right;Rubber;BL;EP23 |
| E29 | 001448-C | Pedal Pad;Left;Rubber;FL;EP23 |
| E42 | 015555-AA | Connecting Plate;Pedal Arm;3 Hole |
| E52 | 004078-A2 | Ball Bearing;6005ZZ;Z25XZ47X12T;;TPI;; |
| E56 | 004072-A2 | Ball Bearing;Flywheel;6002ZZ |

| | | |
|-----|------------|--|
| E57 | 037985-00 | Washer;Flat;8.2x22.0x1.5t;;Zn-BL |
| E58 | 004695-AB | Screw;Hex Socket;Flat;M8x1.25Px12L |
| E59 | 004375-AC | Screw;Phillip;BH;Stainess;M5x0.8Px15L;BE |
| E59 | 004375-AC | Screw;Phillip;BH;Stainess;M5x0.8Px15L;BE |
| E61 | 005351-00 | Clamp;Internal C-Shaped;R-32; |
| E62 | 005356-00 | C-Clip;Internal;R-47 |
| F05 | 009670-E | Rail;Upper;Anodizing;AL 6063;EP68 |
| F09 | 009073-B | Ring;Guid Rail;;SS41;;;;EP68 |
| F10 | 001398-CA | Rubber Pad;Guide Rail;Rubber;EP68 |
| F12 | 0000093798 | Screw;BH;M5X0.8PX13L;;PH;Zn Plate |
| G07 | 0000087749 | Rotational Housing Assembly;MX-E5XC-F;US;E |
| G11 | 015609-AB | End Cap;Swivel Base |
| G13 | 084533 | Screw;Phillip;Round;M3x0.5Px30L;;Zn-BL |
| G14 | 034585-CR | Pulse SensorWire;820L;(TKP H66031P-06); |
| G15 | 004408-00 | Screw;Phillip;BH;M3x0.5Px14L;;Zn-BL |
| G50 | 005355-00 | C-Clip;Internal;R-55 |
| G51 | 009589-A | End Cap;Handlebar;Steel |
| G53 | 004079-A3 | Ball Bearing;6006ZZ;30X55X13T;;TPI;;; |
| G54 | 000856-00 | Hole plug;KSS HP-10;BL;Market |
| G55 | 004539-AC | Screw;Round;Hex Socket;M8X1.25PX25L |
| G56 | 005005-00 | Washer;Spring;Lock;8.2x15.4x2.0t |
| G57 | 004375-00 | Screw;Phillip;BH;M5x0.8Px15L;Gap;;Zn-BL |
| H50 | 004911-00 | Nut;Hex;M16x2.0Px7.0L;Zn Pl |
| H51 | 004134-00 | Bearing;Lower Link Arm End;PHS 16(M16x2) PHS 16(M16X2) - D/C |
| H54 | 004375-AE | Screw;Phillip;BH;Stainess;M5x0.8Px15L;BE |
| J07 | 005487-D | Spring;Compress |
| J50 | 005366-00 | C-Clip;External;S-25 |
| J51 | 0000086231 | Screw;Phillip;BH;M5x0.8Px10L;Zn-BL |
| J52 | 004957-00 | Nut;Lock;M25X1.5P;SS41;BAN |
| J53 | 005025-00 | Washer;Flat;25.5x38.0x1.5t;Black Zinc |
| P01 | 002122-FR | Console Cable;1350L;XAP-08V-1;EP68; |
| P04 | 003374-ER | Connect Wire;Power Switch;1600L;(SCD-026 |
| P06 | 002753-DR | TV Signal Wire;Coax;1600L;5CF |
| P20 | 003383-A | Ferrite Choke;FH0900B-2;Lian Ci;TM38 |
| P45 | 056007-A | Ground Wire;Extension;Pulse Grip;1300mm |
| P58 | 004631-00 | Screw;Phillip;BH;Tapped;4x25L |
| Q03 | 000220-CA | Boot;Console Mast |
| Q04 | 000174-DA | Pedal;Left - D/C |
| Q05 | 000175-DA | Pedal;Right |
| Q08 | 038428-AA | Cover;Upper |
| Q11 | 000330-CA | Boot;Link Arm;Right |
| Q12 | 000331-CA | Boot;Link Arm;Left |
| Q13 | 000249-DA | Boot;Arm Rest;Left |
| Q14 | 000250-DA | Boot;Arm Rest;Right |
| Q15 | 000251-DA | Boot;Swivel Axle |
| Q16 | 000252-CA | Cover;Handlebar |
| Q26 | 000332-BA | Link Arm Pillar |

| | | |
|-----|------------|--|
| Q27 | 007970-B | Connecting Plate;Side Cover;2 Hole |
| Q51 | 005140-A | Washer;Flat;5.5x10.0x1.2T;Black Zinc |
| Q52 | 055204-A | Screw;SelfTapping;4x10L |
| S50 | 004692-A | Bolt;Eye Hook;1/4-20UNCx40L |
| S54 | 003393-A | Ferrite Core;FH1500B;TM87 K1 RH12.5x12.5x8 |
| T04 | 005367-00 | C-Clip;External;S-30 |
| T08 | 005355-00 | C-Clip;Internal;R-55 |
| T11 | 0000086844 | Supt Axle;Idler;SS41;;EP72-T11; |
| V05 | 006675-C | Decal;Aperture;TV Rack |
| V07 | 027982-B | Decal;Side Cover;EP68-US;EP68 |
| Z01 | 004479-00 | Screw;Round;Hex Socket;M8X1.25PX15L |
| Z02 | 005229-00 | Washer;Wavy;20.5x29.0x1.5T;Nylon |
| Z03 | 004370-00 | Screw;Phillip;BH;M5x0.8Px10L;;Zn-BL |
| Z04 | 004533-AB | Screw;Hex Socket;Round;M8x1.25Px65L |
| Z08 | 005220-00 | Washer;Wavy;20.7x29.1x.3T |
| Z09 | 020045-00 | Screw;Phillip;Sink;M5x0.8Px12L;;Zn-BL |
| Z12 | 004539-AC | Screw;Round;Hex Socket;M8X1.25PX25L |
| Z30 | 009081-C | Rod End Bearing Sleeve;SS41;EP68-Z30C; |
| Z31 | 004482-AC | Screw;Hex Socket;Round;M8x1.25Px20L;BED; |
| Z32 | 020425-00 | Washer;Flat;8.4x15.5x1.6T |
| 1 | 0000092423 | Console Mast Set;E3XC-01;US;EP301 |
| 13 | 0000088082 | Drive Axle Set - D/C |
| 154 | 028272-CR | Membrane Keypad;Left;Plane 4Key;CB64 - D/C |
| 155 | 034598-BR | Membrane Keypad;Down;Plane 4Key;CB64\\ D/C |
| 16 | 0000092426 | Lower Control Board Set;E3XC-01;US;EP301\\ D/C |
| 165 | 028505-DR | Signal Wire;5;65L;(FFC-14PIN)x2;CB61; |
| 168 | 056009-A | Power Wire;Heart Rate Board;220L;(TKP 2510A-3P - D/C |
| 17 | 0000093737 | Tension Wheel Set;Idler |
| 179 | 0000093150 | Console Battery Cover 1;MX-E3;US;EP68 - D/C |
| 185 | 0000092441 | lithium batt;9V;H602024-2s - D/C |
| 21 | 0000090642 | Front Stabilizer Set;Right;MX-E5XC-F;US;EP81 |
| 22 | 0000090643 | Front Stabilizer Set;Left;MX-E5XC-F;US;EP81 |
| 26 | 0000093820 | Pulse Sensor Set - D/C |
| 3 | 0000088120 | Pedal Arm Set;Left;;MX-E5XC-F;;EP81 - D/C |
| 31 | 0000092435 | Console Set;H001S004 |
| 32 | 0000093820 | Pulse Sensor Set - D/C |
| 49 | 0000087101 | Drive Belt;Poly-V;420-J14;Carlisle;;Rubber;Net\\ D/C |
| 7 | 0000092389 | Handlebar Set;F;EP301;-;EN - D/C |
| AE3 | 0000088092 | Crank Sleeve Set |
| AE3 | 0000090522 | Crank Pin Sleeve Set\\ D/C |
| AJ1 | 0000089815 | Crank Set - D/C |
| E13 | 008880-B | Axle Ring;Main;SS41;EP68-E13B-01 |
| E13 | 0000088151 | ROLLER SET;MX-E5XC-F;US;EP81 |
| E14 | 0000081718 | Crank Sleeve Axle;S45C;EP72-E14C; |
| E49 | 004080-00 | Ball Bearing;6203ZZ;17X40X12T;;TPI;;; |
| E52 | 004078-A2 | Ball Bearing;6005ZZ;Z25XZ47X12T;;TPI;;; |
| E52 | 004078-00 | Ball Bearing;6005ZZ;25X47X12T;;SKF;;; |

| | | |
|-----|------------|---|
| F01 | 0000317580 | Guide Raid&Roller; Set;;;E5xc/E5X/E7X/E7X - D/C |
| F01 | 0000085977 | Guide Rail;AL 6061;EP74-F01; |
| F12 | 004861-AA | Screw;Umbrella Cross;Big;M5x0.8Px13L;Nickel |
| G04 | 008195-B | CON Plate;Arm Rest;;SPHC;4.0t;;;EP68 |
| G07 | 015608-AC | Swivel Base;SL/GY;TWO COAT&PAIN |
| H50 | 004911-00 | Nut;Hex;M16x2.0Px7.0L;Zn PI |
| H50 | 004911-00X | Nut;Hex;M16X2.0PX7.0T;Zinc |
| Q09 | 001192-CA | Cover;Roller Wheel\\ D/C |
| Q18 | 001408-E | End Cap;Crank Disc;Round\\ D/C |
| Q25 | 015613-AB | Disc;Crank Cover - D/C |
| T03 | 0000086846 | Bearing;Ball;60066LUZ(30x55x13t);TPI - D/C |